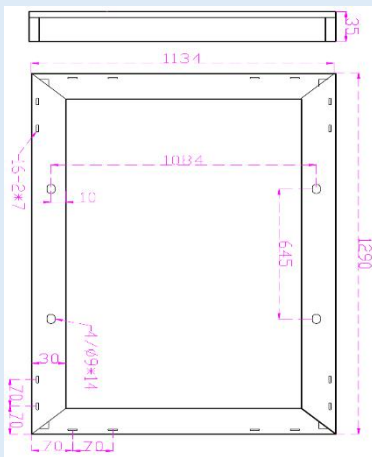
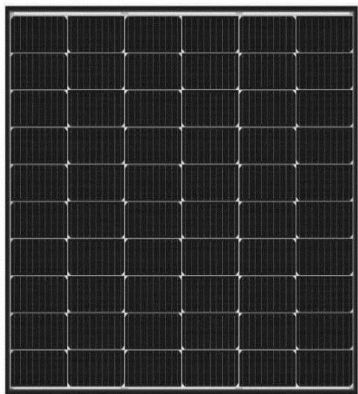
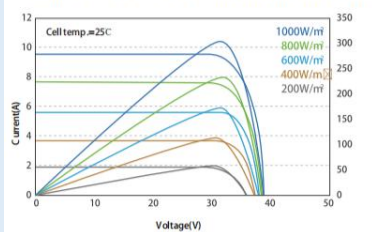


Datasheet

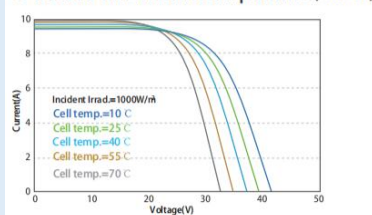
- 300W Mono half-cell PERC Module



U-I/P-U Curve at Different Irradiation (300W)



U-I Curve at Different Temperature (300W)



- SPECIFICATIONS

Maximum Power, P_m	300
Tolerance, %	+3%
Open Circuit Voltage, V_{oc}	41.04
Maximum Power Voltage, V_{mp}	34.20
Maximum Power Current, I_{mp}	8.77
Short Circuit Current, I_{sc}	9.38
Module Efficiency, %	18
Solar Cell Efficiency, %	21.6
Series Fuse Rating, A	15
Junction Box	IP65
Maximum system voltage, V	DC1000
Operating Temperature, °C	-40~+85°C
Dimension:	1290*1134*40mm
Net Weight:	19KG/Pc

- PRODUCT FEATURE

- Bypass diode minimizes the power drop by shade.
- The conversion efficiency of solar cell is above 21.6%.
- White tempered glass, EVA resin, weather-proof film, and anodized aluminum frame to provide efficient protection from the severest environmental conditions.
- Waterproof. Perfect for grid applications.
- Product guarantee 10 years.

- ELECTRICAL CHARACTERISTICS

Electric Performance Typical Performance Characteristics	
Short Circuit Current Temperature Coefficient, mA/C	0.052%
Open Circuit Voltage Temperature Coefficient, V/C	- 0.300%
Maximum Power Temperature Coefficient, %/C	- 0.400%
Performance Warranty	90%output , 12 years 80%output , 25 years

- QUALITY ASSURANCE

- Electrical Insulation test
- Outdoor exposure test
- Hot-spot endurance test
- UV-exposure
- Thermal cycling test
- Humidity freeze test
- Damp heat Test
- Robustness termination test
- Wet leakage current test
- Mechanical load test
- Hail impact test
- Bypass diode thermal test

